



CATHOLIC SCHOOL SELECTION GUIDE

2023-2024



CONTENTS

CELEBRATING COMMUNITY	4
INSPIRING ACHIEVEMENT	5
ENROLLMENT PROCESS	6
TUITION ASSISTANCE	7
CATHOLIC PRESCHOOLS & PRE/K-12 SCHOOLS	8
CATHOLIC ELEMENTARY SCHOOLS	9-12
CATHOLIC HIGH SCHOOLS	13
MAP	13-14

Where
faith
meets
Education





CELEBRATING COMMUNITY



Our faith in Jesus Christ is the reason our schools exist. Every day, children and youth in Catholic schools have the opportunity to learn about the person of Jesus Christ. They are invited to know Jesus personally, to love Him intimately, and to serve Him wholeheartedly. This faith is lived out within a supportive community in which students and their families are united in sharing common values and in which parental leadership and involvement is supported and welcomed.

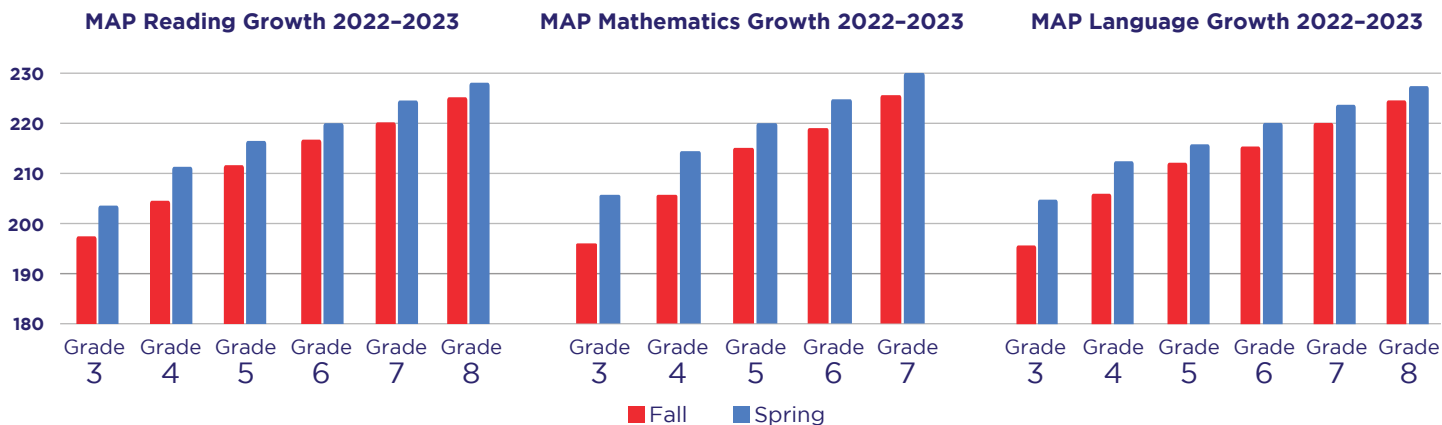
Visit any Catholic school, and you will notice the spirit of camaraderie among students, teachers, and administrators. Catholic schools have a welcoming community spirit that unites students, parents, and educators who share common values and goals as communities of faith.

Within this supportive environment, your child has the opportunity to grow in many ways. A wide variety of extracurricular activities – from academic and social clubs to athletics and performing arts – allows students to explore and express their individual gifts and abilities. Their growth is supported by teachers who serve as role models, coaches, and counselors who spend many hours helping with extracurricular activities, leading retreats, and assisting students with their academic, personal, and spiritual growth.


Catholic schools welcome students from a variety of ethnic, religious, and social backgrounds. (Twenty-Five percent of students who attend Catholic schools are from other faith traditions.)

INSPIRING ACHIEVEMENT

Students in the elementary schools of the Archdiocese of Louisville are assessed using the NWEA MAP assessment a minimum of twice a year. This assessment measures academic growth over a school year. MAP Growth assessments measure growth in reading, mathematics, and language usage. The accompanying charts show growth for fall 2022 – spring 2023 in grades 3-7 in all areas tested.



Secondary Achievements and Class of 2023 Report Card

<p>95%</p> <p>of graduates pursuing college/post-secondary education</p>	<p>19</p> <p>National Merit Semi-Finalists</p>	<p>19</p> <p>National Merit Finalists</p>	<p>20</p> <p>National Merit Commended Scholars</p>	
<p>52</p> <p>Governor's Scholars (Class of 2023)</p>	<p>25</p> <p>Governor's School for the Arts</p>	<p>23</p> <p>Average ACT Score (97% of students took the ACT)</p>	<p>144,761</p> <p>High School Hours of Community Service</p>	<p>\$165.6 Million</p> <p>College Scholarships</p>

SCHOOLS OF EXCELLENCE

Students emerge from Catholic schools with a robust liberal arts education supported by technology. Students learn decision-making skills, develop high levels of literacy in language arts and mathematics, apply inquiry-based experimentation and problem solving, and build understanding and appreciation for world history and cultures. They also participate in award-winning visual and performing arts programs, build lifelong habits of fitness, and engage in a variety of high-quality electives and extracurricular activities.

Several Catholic schools have been recognized as National Blue Ribbon Schools of Excellence. This award represents the highest national honor presented to quality schools by the U.S. Department of Education. In addition, a number of schools have won awards for technology innovation, teaching excellence, and the arts.

The professionals who teach your children are well prepared to provide a rigorous and comprehensive education. Catholic school teachers are certified, and three out of four have advanced degrees. In addition, teachers regularly participate in continuing education opportunities to keep current with innovations in education and religious instruction.



Discover Catholic Schools Week
November 12–18, 2023

Celebrate Catholic Schools Week
January 28–February 3, 2024

ENROLLMENT PROCESS FOR ELEMENTARY

Visit Schools: *September–January.*

Discover Catholic Schools Week:
November 12–18, 2023.

Submit Tuition Assistance Applications:
October 15–November 30, 2023.

Families Notified of Tuition Assistance:
By March 1, 2024.

ENROLLMENT PROCESS FOR SECONDARY

Attend Open Houses: *October–December.*
(See each school's date and time on page 13.)

Placement Test: *Saturday, December 9, 2023*
(Weather make-up Saturday, December 16, 2023)
from 9:00 a.m. to 12:30 p.m. Students take the test at the high school they plan to attend and should bring two #2 pencils. There is no charge for the test.

Submit Tuition Assistance Application:
*October 15–Consult high school for deadline.**

Acceptance Letters Sent: *February.*

Registration: *February–March.*

Families Notified of Tuition Assistance:
By first week of March.

** If families have children in both elementary and secondary schools, it is important to get the tuition assistance application in by November 30. Having all children on one form will ensure that the determination of need for your family is complete.*

TUITION ASSISTANCE

Need-based tuition assistance is available. Last year nearly \$21 million in tuition assistance was distributed to families in the Archdiocese of Louisville.

Who is eligible? All families with one or more children enrolled in or applying to a Catholic school in the Archdiocese of Louisville.

How do I apply? All families use a single form (for all students in both elementary and secondary)—the FACTS management application. Beginning on October 15, 2023, this application will be available online at www.ceflou.org. Families can submit their application and upload their documents for processing at this site. Completed forms and a small application fee must be submitted between October 15, 2023 and November 30, 2023. A copy of your 2022 tax returns must be submitted with the form.

Do I apply each year? Yes, each family must apply every year you wish to receive tuition assistance.

When will I know if I have been granted tuition assistance? Elementary tuition assistance awards will be communicated by the Catholic Education Foundation by March 1, 2024. High school tuition assistance awards will be communicated by the high school(s) in which your students are enrolled during the first week of March.

Given the high volume of applications, we encourage you to submit your form early to ensure timely completion of the review process. Completed applications received by November 30, 2023, will participate in the initial grant awards. A much smaller amount of tuition assistance may be available for forms submitted after that date.

For questions, call the Catholic Education Foundation at 502-585-2747 or the high school your student attends or plans to attend.



Catholic
Education
Foundation



*The deadline
for submitting
tuition assistance
applications for the
2024-2025 school year
is November 30, 2023.*



CATHOLIC PRESCHOOLS

	CONTACT INFORMATION	MAP LOCATION	BEFORE SCHOOL CARE	AFTER SCHOOL CARE	PRESCHOOL /PreK	DAYCARE	AGES SERVED	2023-2024 ENROLLMENT
ST. JOSEPH CHILD DEVELOPMENT CENTER 2823 Frankfort Avenue, Louisville, KY 40206 502-893-0241, ext. 247 • www.sjkids.org Hours 7:00 a.m.–6:00 p.m.	April Manning, Director aprilm@sjkids.org	1			X	X	6 wks–PreK	200
ST. JOSEPH MONTESSORI CHILDREN'S CENTER* (NELSON COUNTY) 300 West John Fitch Avenue, P.O. Box 725 Bardstown, KY 40004-0725 502-203-3510 • www.stjosephmontessori.org Hours: 7:30 a.m.–6:00 p.m.	Rachel Raisor, Director r.raisor.sjmcc@gmail.com	2	X	X	X		Ages 3–6 (Extended care for ages 3–6 and summer camp for ages 3–8)	43
SACRED HEART PRESCHOOL 3105 Lexington Road, Louisville, KY 40206 502-896-3941 • www.shslou.org Hours: 7:15 a.m.–6:00 p.m. (Also see Sacred Heart Model School in elementary Catholic school listing.)	Austin Nikolich, Director anikolich@shslou.org	3	X	X	X		Ages 1-5	220

Pre/K-12 SCHOOLS

	CONTACT INFORMATION	MAP LOCATION	BEFORE SCHOOL CARE	AFTER SCHOOL CARE	PRESCHOOL /PreK AGES	GRADES	2023-2024 ENROLLMENT
CORPUS CHRISTI CLASSICAL ACADEMY* (SHELBY COUNTY) 105 Main Street, P.O. Box 1142, Shelbyville, KY 40066-1142 502-487-0409 • www.corpuschristiclassical.org	Kathy Fehder, Principal office@corpuschristiclassical.org	4			Ages 3–6 (Montessori Primary)	Preschool–12	50
HOLY ANGELS ACADEMY* 12201 Old Henry Road, Louisville, KY 40223 502-254-9440 • www.holyangelslouisville.com	Michael Swearingen, Headmaster administration@haalou.org	5			Ages 3–5 (School Year)	Preschool–12	115
IMMACULATA CLASSICAL ACADEMY* 440 Zorn Avenue, Louisville, KY 40206 502-365-3545 • https://immaculata.org	Justin Fout, Principal jfout@immaculata.org Contact: Sara Hamilton shamilton@immaculata.org	6		X	Ages 3–4 (School Year)	Preschool–12	232
PITT ACADEMY* 7515 Westport Road, Louisville, KY 40222 502-966-6979 • www.pitt.com	Renee Doty, Principal rdoty@pitt.com	7		X		K–12	62

* Specialized curriculum. Please see school website.

CATHOLIC ELEMENTARY SCHOOLS

	CONTACT INFORMATION	MAP LOCATION	BEFORE SCHOOL CARE	AFTER SCHOOL CARE	PRESCHOOL /PreK AGES	GRADES	2023-2024 ENROLLMENT
ST. AGNES 1800 Newburg Road, Louisville, KY 40205 502-458-2850 • www.stagneslouisville.org	Jessica Young, Principal jyoung@stagneslouisville.org Contact: Vanessa Haulk vhaulk@stagneslouisville.org	8	X	X (Summer program.)	Ages 3-4 (Summer Program)	Preschool -8	508
ST. ALBERT THE GREAT 1395 Girard Drive, Louisville, KY 40222 502-425-1804 • www.school.stalbert.org	Ellen Martin, Principal emartin@stalbert.org Contact: Janelle Richardson jrichardson@stalbert.org	9		X	Ages 3-4 (School Year)	Preschool -8	716
ST. ALOYSIUS (OLDHAM COUNTY) 122 Mount Mercy Drive, Pewee Valley, KY 40056 502-241-8516 • www.staloyusky.org	Paula Smith, Principal schooloffice@staloyusppwv.org Contact: Traci Hargrove thargrove@staloyusppwv.org	10		X	Ages 3-5 (School Year)	Preschool -8	423
ST. ANDREW ACADEMY 7724 Columbine Drive, Louisville, KY 40258 502-935-4578 ext. 237 • www.saintandrewacademy.org	Mikelle Cortez, Principal mikellecortez@saintandrewacademy.org Contact: Barbara Schrader bschrader.standrew@gmail.com	11	X	X (Summer program.)	Ages 2-4 (Summer Program)	Preschool -8	188
ASCENSION 4600 Lynnbrook Drive, Louisville, KY 40220 502-451-2535 • www.ascension-parish.com	Terrence Mullaney, Principal terry@ascension-parish.com	12	X	X (Summer program.)	Ages 3-4 (Summer Program)	Preschool -8	205
ST. ATHANASIUS 5915 Outer Loop, Louisville, KY 40219 502-969-2345 • www.stathanasiuslouisville.com	Kristen Blankenship, Principal blankenshipk@athanasiusschool.org Contact: Brittany Ernst ernstb@athanasiusschool.org	13	X	X (Summer program.)	Ages 3-4 (Summer Program)	Preschool -8	220
ST. BERNARD 7500 Tangelo Drive, Louisville, KY 40228 502-239-5178 • www.stbcatholicsschool.com	Julie Perdue, Principal jperdue@stbernardlou.com Contact: Amanda Stewart astewart@stbernardlou.com	14	X	X	Ages 3-4 (School Year)	Preschool -8	390
ST. EDWARD 9610 Sue Helen Drive, Louisville, KY 40299 502-267-6633 • www.stedward.school	Karen Loper, Principal kloper@stedward.school	15		X	Ages 3-4 (School Year)	Preschool -8	339
ST. FRANCIS OF ASSISI 1938 Alfresco Place, Louisville, KY 40205 502-459-3088 • www.sfalouisville.org	Steve Frommeyer, Principal sfrommeyer@ccsfa.org Contact: Sue Dunaway sdunaway@ccsfa.org	16	X	X	Age 4 (School Year)	PreK-8	237
ST. GABRIEL 5503 Bardstown Road, Louisville, KY 40291 502-239-5535 • www.stgabrielcatholicsschool.net	Lara Krill, Principal lkrill@stgabriel.net Contact: Becca Thornton bthornton@stgabriel.net	17		X (Summer program.)	Ages 3-4 (Summer Program)	Preschool -8	663
HOLY SPIRIT 322 Cannons Lane, Louisville, KY 40206 502-893-7700 • www.hspirit.org	Doris Swenson, Principal dswenson@hspiritschool.org Contact: Jen Giannone jgiannone@hspiritschool.org	18		X (Summer program.)	Ages 3-4 (Summer Program for age 4)	Preschool -8	444
HOLY TRINITY 423 Cherrywood Road, Louisville, KY 40207 502-897-2785 • www.ht-school.org	Jack Richards, Principal jrichards@ht-school.org	19	X	X	Age 4 (School Year)	PreK-8	759
HOLY TRINITY CLIFTON SCHOOL* 2117 Payne Street, Louisville, KY 40206 502-896-8480 • www.ht-school.org	Paula Watkins, Head of School pwatkins@ht-school.org	19A	X	X		K-8	79

* Specialized curriculum. Please see school website.

CATHOLIC ELEMENTARY SCHOOLS

	CONTACT INFORMATION	MAP LOCATION	BEFORE SCHOOL CARE	AFTER SCHOOL CARE	PRESCHOOL /PreK AGES	GRADES	2023-2024 ENROLLMENT
ST. JAMES 1818 Edenside Avenue, Louisville, KY 40204 502-454-0330 ext. 11 • www.stjamesbluejays.com	Gregory Boehmer, Principal gboehmer@stjamesbluejays.com	20	X	X (Summer program.)	Ages 3-4 (Summer Program)	Preschool -8	102
JOHN PAUL II ACADEMY 3525 Goldsmith Lane, Louisville, KY 40220 502-452-1712 • www.jp2a.org	Alicia Conliffe, Principal aconliffe@jp2a.org	21	X	X (Summer program.)	Ages 3-4 (Summer Program)	Preschool -8	114
ST. MARGARET MARY 7813 Shelbyville Road, Louisville, KY 40222 502-426-2635 • https://stmm.org/school/	Wendy Sims, Principal wsims@stmm.org Contact: Laura Hoehn lhoehn@stmm.org	22		X	Age 4 (School Year)	Pre K-8	676
ST. MARTHA 2825 Klondike Lane, Louisville, KY 40218 502-491-3171 • www.stmartharocks.com	Suzanne Barnett, Principal office@stmarthaschool.org Contact: Taffie Duckworth tduckworth@stmarthaschool.org	23	X	X (Summer program.)	Ages 3-4 (Summer Program)	Preschool -8	328
SAINT MARY ACADEMY 11311 Saint Mary Lane, Prospect, KY 40059 502-315-2555 • www.saintmaryacademy.com	Trevor Timmerberg, Principal trevor.timmerberg@saintmaryacademy.com Contact: Susan Naber susan.naber@saintmaryacademy.com	24		X	Ages 3-4 (School Year)	Preschool -8	499
ST. MICHAEL 3703 Stone Lakes Drive, Louisville, KY 40299 502-267-6155 • www.stmlou.org	Kristyn Bowman, Principal kbowman@stmichaellouisville.org Contact: Connie Fone cfone@stmichaellouisville.org	25	X	X (Summer program.)	Ages 3-4 (All year.) Daycare Ages 6 weeks to young threes. (All year.)	Preschool -8	710
NATIVITY ACADEMY AT ST. BONIFACE* 529 East Liberty Street, Louisville, KY 40202 502-855-3300 • www.nativitylouisville.org	Amy Olson, Executive Director aolson@nativityacademy.org Roni Witherspoon, Principal rwitherspoon@nativityacademy.org	26	X	X		6-8	44
ST. NICHOLAS ACADEMY 5501 New Cut Road, Louisville, KY 40214 502-368-8506 • www.sna-panthers.org	Chantel Jaso, Principal cjaso@sna-panthers.org Contact: Mary Medley mmedley@sna-panthers.org	27	X (Doors open at 7:15 a.m.)	X	Ages 3-4 (Pre-K & Extended Care During School Year)	Preschool -8	247
NOTRE DAME ACADEMY 1927 Lewiston Drive, Louisville, KY 40216 502-447-3155 • www.ndasaints.org	Ashley Titus, Principal a.titus@ndasaints.org Contact: Daivie Kay d.kay@ndasaints.org	28	X	X (Summer program.)	Ages 3-4 (Summer program.)	Preschool -8	492
OUR LADY OF LOURDES 510 Breckenridge Lane, Louisville, KY 40207 502-895-5122 • www.ourlourdes.org/school	Morgan Wissing, Principal morganw@ourlourdes.org Contact: Vicki Patton vickip@ourlourdes.org	29		X	Ages 3-4 (School Year)	Preschool -8	438
ST. PATRICK 1000 North Beckley Station Road, Louisville, KY 40245 502-244-7083 • www.stpatlou.org	Dr. Nathan Sturtzel, Principal nsturtzel@stpatlou.org Contact: Suzy Mackowiak smackowiak@stpatlou.org	30		X	Ages 3-4 (School Year)	Preschool -8	691
ST. PAUL 6901 Dixie Highway, Louisville, KY 40258 502-935-5511 • www.saintpaulschool.net	Jennifer Burba, Principal jen.burba@saintpaulschool.net	31	X (Doors open at 7:15 a.m.)	X (Summer program.)	Age 3 Preschool Age 4 Pre-kindergarten (Summer program age 4.)	Preschool -8	284
ST. RAPHAEL 2131 Lancashire Avenue, Louisville, KY 40205 502-456-1541 • www.straphaelschool.org	Amy Fears, Principal afears@sraparish.org Contact: Shanna Selby sselby@sraparish.org	32		X	Age 3-4 (School Year)	Preschool -8	420

CATHOLIC ELEMENTARY SCHOOLS

	CONTACT INFORMATION	MAP LOCATION	BEFORE SCHOOL CARE	AFTER SCHOOL CARE	PRESCHOOL /PreK AGES	GRADES	2023-2024 ENROLLMENT
ST. RITA 8709 Preston Highway, Louisville, KY 40219 502-969-7067 • www.stritacatholicsschool.com	Neil Hulsewede, Principal nhulsewede@stritacatholicsschool.com Contact: Tatiana Sarduy, tsarduy@stritacatholicsschool.com	33		X (Summer program.)	Ages 3-4 (Summer program.)	Preschool -8	266
SACRED HEART MODEL SCHOOL* 3107 Lexington Road, Louisville, KY 40206 502-896-3931 • www.shslou.org	Leah Mullen, Principal lmullen@shslou.org Contact: Remy Noble rnoble@shslou.org	34		X	Ages 1-5 (Sacred Heart PreK) and Jr. K (Sacred Heart Model)	Jr. K-8	411
ST. STEPHEN MARTYR 2931 Pindell Avenue, Louisville, KY 40217 502-635-7141 • www.ssmartyr.org	Stephanie Longshore, Principal slongshore@ssmartyr.org Contact: Liz Vawryk lvawryk@ssmartyr.org	35		X (Summer program.)	Ages 3-4 (Summer program.)	Preschool -8	275

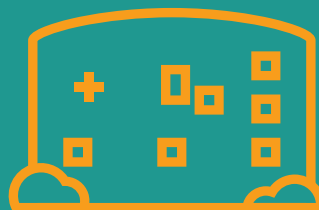
Hardin County

ST. JAMES 401 Robinbrooke Blvd. Elizabethtown, KY 42701 270-765-7011 • www.sjschoolonline.org	Sr. Mary Grace Watson, O.P., Principal srmgrace@sjschoolonline.org Contact: Jennifer Hartlage Moran jmoran@stjames-etown.org	36	X	X	Ages 3-4 (School Year)	Preschool -8	448
--	---	----	---	---	---------------------------	-----------------	-----

Marion County

ST. AUGUSTINE 236 South Spalding Avenue, Lebanon, KY 40033 270-692-2063 • www.staugustinecatholicsschools.net	Cindy Bland, Principal cbland@staschools.net (Principal) Contact: Nikki Benningfield nbenningfield@staschools.net	37		X	Ages 3-4 (School Year)	Preschool -8	194
--	--	----	--	---	---------------------------	-----------------	-----

* Specialized curriculum. Please see school website.



CATHOLIC ELEMENTARY SCHOOLS

CONTACT
INFORMATION

MAP
LOCATION

BEFORE
SCHOOL
CARE

AFTER
SCHOOL
CARE

PRESCHOOL
/PreK AGES

GRADES

2023-2024
ENROLLMENT

Nelson County

ST. ANN 7500 Howardstown Road, Howardstown, KY 40051 502-286-3181	Lois Ann Cecil, Principal staschool@hughes.net	38				K-8	18	
ST. CATHERINE 413 N. 1st Street, New Haven, KY 40051 502-549-3680 • www.stcatherineacademy.net	Jessie Reed, Principal jreed@saintcatherineschool.com Contact: Katie Robertson parishoffice@saintcatherineschool.com	39		X	Ages 3-4 (School Year)	Preschool -8	66	
ST. GREGORY 350 Samuels Loop, Cox's Creek, KY 40013 502-348-9583 • www.stgregoryeagles.org	Camille Boone, Principal camille.boone@stgregoryparish.org Contact: Lynne Potter lynne.potter@stgregoryparish.org	40	X	X	Ages 3-4 (School Year)	Preschool -8	215	
ST. JOSEPH 320 West Stephen Foster Avenue, Bardstown, KY 40004 502-348-5994 • www.stjoelem.org	Chuck Abell, Principal cabell@stjoeelem.org Contact: Rebecca Medley rmedley@stjoeelem.org	41		X	Ages 3-4 (School Year)	Preschool -8	417	

Washington County

ST. DOMINIC 312 West High Street, Springfield, KY 40069 859-336-7165 • www.stdominicelementary.org	Melissa Taylor, Principal mtaylor@stdominicelementary.org Contact: Connie Smith csmith@stdominicelementary.org	42		X	Ages 3-4 (School Year)	Preschool -8	234	
---	---	----	--	---	---------------------------	-----------------	-----	--



CATHOLIC HIGH SCHOOLS

	CONTACT INFORMATION	MAP LOCATION	OPEN HOUSE	YOUNG MEN	YOUNG WOMEN	2023-2024 ENROLLMENT
ASSUMPTION HIGH SCHOOL 2170 Tyler Lane, Louisville, KY 40205 502-458-9551 • www.ahsrockets.org	Mary Lang, President Martha Tedesco, Principal Contact: Elisabeth Cassidy elisabeth.cassady@ahsrockets.org	43	Saturday, November 11 10 a.m. - 2 p.m.		X	905
BETHLEHEM HIGH SCHOOL 309 West Stephen Foster Avenue, Bardstown, KY 40004 502-348-8594 • www.bethlehemhigh.org	Sara Thurmond, Principal Contact: Paige Montgomery pmontgomery@bethlehemhigh.org	44	Wednesday, December 6 5 - 8 p.m.	X	X	300
DESALES HIGH SCHOOL 425 W. Kenwood Drive, Louisville, KY 40214 502-368-6519 • www.desaleshighschool.com	Dr. Rick Blackwell, President Anastasia Quirk, VP of Academics/Principal Contact: Justin Lewis justin.lewis@desaleshs.com	45	Sunday, November 19 12 - 3 p.m.	X		299
HOLY CROSS HIGH SCHOOL 5144 Dixie Highway, Louisville, KY 40216 502-447-4363 • www.holycrosshs.com	Danielle Wiegandt, President Jennifer Barz, Principal Contact: Stefanie Williams swilliams@holycrosshs.com	46	Sunday, November 19 5 - 7:30 p.m.	X	X	253
MERCY ACADEMY 5801 Fegenbush Lane, Louisville, KY 40228 502-671-2010 • www.mercyacademy.com	Becky Montague, President Dr. Cynthia Smith-Ough, Principal Contact: Paige Stewart pstewart@mercyjaguars.com	47	Sunday, November 12 1 - 4 p.m.		X	508
PRESENTATION ACADEMY 861 South 4th Street, Louisville, KY 40203 502-583-5935 • www.presentationacademy.org	Amy Skretny Fowler, Head of Ext. Affairs Becca Noonan, Principal Contact: Jazzmine Golden jgolden@presentationacademy.org	48	Saturday, November 4 12 - 3 p.m.		X	157
SACRED HEART ACADEMY 3175 Lexington Road, Louisville, KY 40206 502-897-6097 • www.shslou.org	Dr. Karen McNay, President Dr. Tim Adams, Principal Contact: Nicole Burke nburke@shslou.org	49	Sunday, November 5 1 - 4 p.m.		X	736
TRINITY HIGH SCHOOL 4011 Shelbyville Road, Louisville, KY 40207 502-736-2120 • www.trinityrocks.com	Dr. Robert Mullen, President Dr. Daniel Zoeller, Principal Contact: James Torra torra@trinityrocks.com	50	Sunday, November 12 1 - 5 p.m.	X		1261
ST. XAVIER HIGH SCHOOL 1609 Poplar Level Road, Louisville, KY 40217 502-637-4712 • www.saintx.com	Paul D. Colistra, President Amy Sample, Principal Contact: Curt White cwhite@saintx.com	51	Sunday, November 12 12 - 4 p.m.	X		1089

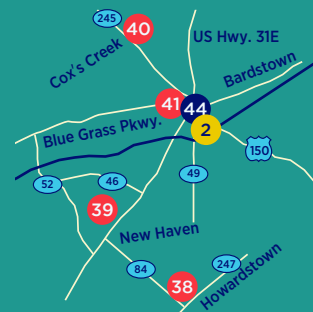
HARDIN CO.



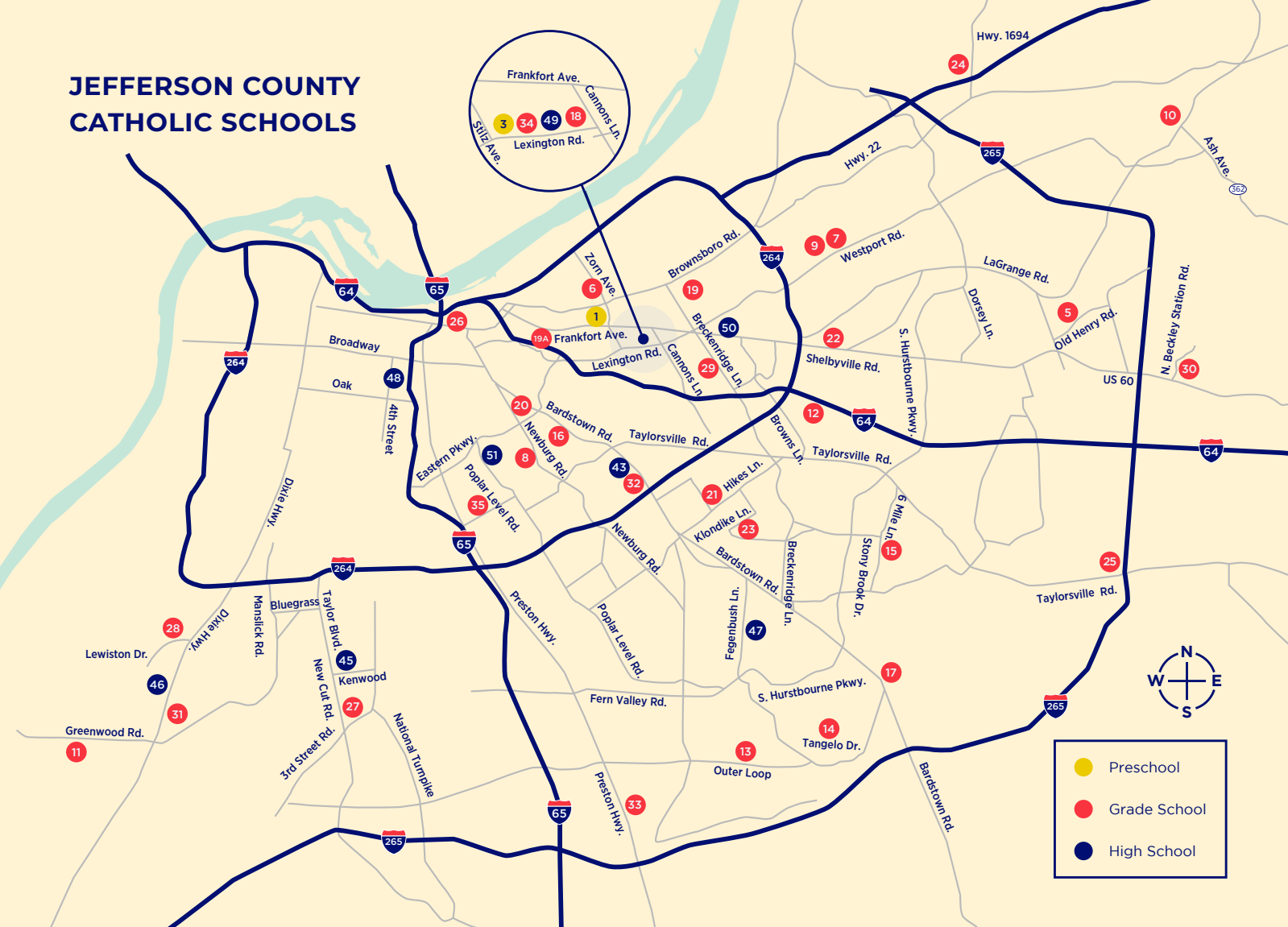
MARION CO.



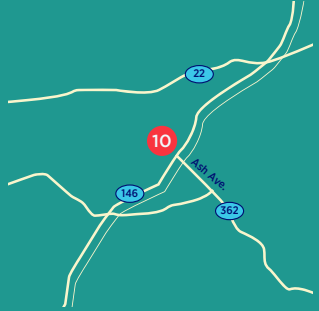
NELSON CO.



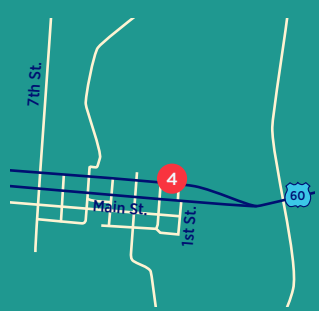
JEFFERSON COUNTY CATHOLIC SCHOOLS



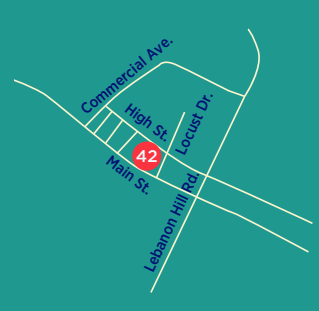
OLDHAM CO.



SHELBY CO.



WASHINGTON CO.



Education

you can believe in.



PASTORAL CENTER
3940 POPLAR LEVEL ROAD
LOUISVILLE, KY 40213-1463
502-634-1315 | COMM@ARCHLOU.ORG
LOUISVILLECATHOLICSCHOOLS.COM



THIS SELECTION GUIDE MADE
POSSIBLE BY YOUR GIFTS TO THE
CATHOLIC SERVICES APPEAL.